

Monitoring your care and treatment

How we check your treatment is in line with
the law and meets professional standards



Your care and treatment

The Mental Welfare Commission checks that your treatment is in line with the law

The law says your treatment must be safe and legal when you get care or treatment for a mental illness or a learning disability.

There are rules about how you can be given care and treatment for a mental illness or a learning disability.

The Mental Welfare Commission tries to make sure that the people who look after you follow the rules.

How the Mental Welfare Commission finds out about your care and treatment

The law says that the people who look after you must let the Commission know if you are sent to hospital or kept in hospital, even when you do not want to be there.

The law says that the people who look after you must let the Mental Welfare Commission



know if a doctor has said you have got to have treatment, even when you do not want it.

Medical treatment means pills, medicine, counselling or anything else that will help you to get better when you are ill.

Other ways the Mental Welfare Commission might find out about your care and treatment

You might get in touch with the Commission because you think the people looking after you are not following the rules. The Commission has a special telephone number to help you do this.

Someone who knows you might get in touch with the Mental Welfare Commission because they are worried about you.

The Mental Welfare Commission might meet you when they visit a hospital.

What the Mental Welfare Commission does when it hears about you

The Commission checks that the treatment you are getting is safe and legal. If they are worried about you they might decide to visit you.

What the Mental Welfare Commission does if it thinks something is wrong with your care or treatment

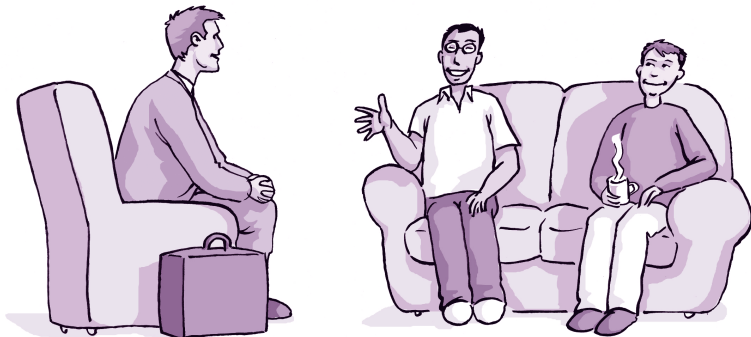
They will phone you or send you a letter.

They will also get in touch with your doctor and your social worker.

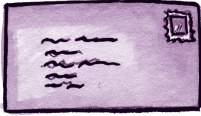
What you should do if the Mental Welfare Commission lets you know something is wrong

Talk to your doctor and your social worker to find out what will happen next. You may need a solicitor or an independent advocate. The people who help look after you should help you with this.

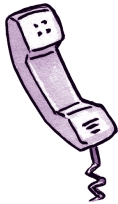
You can also phone the Commission and ask for advice.



Get in touch



Mental Welfare Commission for Scotland
Thistle House
91 Haymarket Terrace
Edinburgh
EH12 5HE



Freephone: 0800 389 6809
Office: 0131 313 8777

Other leaflets in this series

- Who we are and what we do
- Visiting people
- Welfare Guardianship

You can get these leaflets from our office or from our website www.mwscot.org.uk

Stay in touch

Fill in this form and we will send you news and information about our work.

Name _____

Address _____

E-mail _____

Send me information about

- Learning disability service users or carers
- Mental health service users or carers

I would like my information in another format

Easy read Large print

Tape Braille

Another language

which language _____

I agree to join the Mental Welfare Commission mailing list.

Please sign: _____



Thistle House
91 Haymarket Terrace
Edinburgh
EH12 5HE

Tel: 0131 313 8777
Fax: 0131 313 8778
Service user and carer
freephone: 0800 389 6809

enquiries@mwscot.org.uk

www.mwscot.org.uk