

dignity &  
rights  
ethical treat  
respect ca  
& equality

STATISTICAL MONITORING

SEPTEMBER 2015

## Contents

### Mental Health Act Monitoring Report 2014/15: Tables

Table.1	Emergency detention by age and gender 2014/15 .....	1
Table.2	EDCs with and without MHO consent by NHS Board 2014/15.....	1
Table.3	EDCs by pre-detention status and MHO consent to detention 2014/15 .....	2
Table.4	EDCs by time of granting of certificate & MHO consent to detention 2014/15 ..	2
Table.5	Duration of emergency detention certificates granted 2014/15 .....	2
Table.6	Short-term detention certificates granted by age and gender 2014/15.....	3
Table.7	Short-term detention certificates 2010 - 2015: by year and where named person is recorded or consulted .....	3
Table.8	Compulsory powers granted, by order type and NHS Board 2014/15 - number, rate per 100k population and NRAC formula adjustment .....	3
Table.9	Compulsory Treatment Orders granted 2014/15 - number and rate per 100k population .....	4
Table.10	The use of nurse's power to detain by hospital and gender 2014/15 .....	5
Figure 10	Trend in the granting of new long-term civil orders 1985 - 2015: five year moving average.....	6
Table.11	Number of extant compulsory orders on 1 January 2015 (Rate per 100,000 populations, by NHS Board in rank order). .....	6
Table 12	Individuals readmitted from community CTOs 2008 -15.....	7

**Table.1 Emergency detention by age and gender 2014-15**

Age Range	Women	Men	Total	Women	Men	Total	Women	Men	Total
	No.	No.	No.	%	%	%	% change from 2013-14		
0-15	9	8	17	53	47	100	-50.0	60.0	-26.1
16-17	17	11	28	61	39	100	21.4	-8.3	7.7
18-24	130	104	234	56	44	100	7.4	5.1	6.4
25-44	335	358	693	48	52	100	5.0	13.7	9.3
45-64	294	272	566	52	48	100	-5.2	-6.2	-5.7
65-84	184	194	378	49	51	100	13.6	25.2	19.2
85+	56	34	90	62	38	100	-6.7	6.3	-2.2
<b>Total</b>	<b>1025</b>	<b>981</b>	<b>2006</b>	<b>51</b>	<b>49</b>	<b>100</b>	<b>2.1</b>	<b>8.0</b>	<b>4.9</b>

**Table.2 EDCs with and without MHO consent by NHS Board 2014-15**

Health Board	Rate per 100K Population	Before detention		MHO consent			
		Community	Hospital	With		Without	
		%	%	No.	%	No.	%
Ayrshire & Arran	38	30	70	93	65	49	35
Borders	25	62	38	20	69	9	31
Dumfries & Galloway	49	54	46	40	54	34	46
Fife	41	50	50	115	77	35	23
Forth Valley	32	55	45	55	58	40	42
Grampian	23	67	33	86	64	48	36
Greater Glasgow & Clyde	53	38	62	171	28	433	72
Highland	49	55	45	114	73	43	27
Lanarkshire	27	40	60	110	62	67	38
Lothian	29	47	53	151	61	98	39
Orkney	32	71	29	7	100		0
Shetland	39	22	78	8	89	1	11
Tayside	41	54	46	137	80	34	20
Western Isles	29	25	75	2	25	6	75
<b>Scotland</b>	<b>38</b>	<b>46</b>	<b>54</b>	<b>1109</b>	<b>55</b>	<b>897</b>	<b>45</b>

**Table.3 EDCs by pre-detention status and MHO consent to detention 2014-15**

Pre-detention status*	MHO Consent					
	With		Without		Total	
	No.	%	No.	%	No	%
Informal in hospital	523	48	559	52	1082	100
From community	586	63	338	37	924	100
<b>Total</b>	<b>1109</b>	<b>55</b>	<b>897</b>	<b>45</b>	<b>2006</b>	<b>100</b>

**Table.4 EDCs by time of granting of certificate and MHO consent to detention 2014-15**

Time of granting certificate	EDCs		MHO consent				
			With		Without		Total
	No.	%	No.	%	No.	%	%
Within office hours	664	33	401	60	263	40	664
Outside office hours	1342	67	708	53	634	47	1342
<b>Total</b>	<b>2006</b>	<b>100</b>	<b>1109</b>	<b>55</b>	<b>897</b>	<b>45</b>	<b>2006</b>

**Table.5 Duration of emergency detention certificates granted 2014-15**

	Within 24 hours of admission		24-72 hours after admission		Total	
	No.		No.		No.	%
EDCs revoked	253		308		561	28
EDC superseded by STDC	661		414		1075	54
Order expired at 72 hours	n/a		n/a		357	18
Not available	*7		*6		*13	1
<b>Total</b>	<b>921</b>		<b>728</b>		<b>2006</b>	<b>100</b>

\*For 13 people we were unable to determine the duration of the EDC; the dispersal across length of time has been estimated this is fewer than the 19 last year.

**Table.6 Short-term detention certificates granted by age and gender 2014-15**

Age Range	Women	Men	Total	Women	Men	Total
	No.	No.	No.	%	%	%
0-15	42	5	47	89	11	100
16-17	57	22	79	72	28	100
18-24	139	187	326	43	57	100
25-44	533	701	1234	43	57	100
45-64	595	553	1148	52	48	100
65-84	475	472	947	50	50	100
85+	133	79	212	63	37	100
<b>Total</b>	<b>1974</b>	<b>2019</b>	<b>3993</b>	<b>49</b>	<b>51</b>	<b>100</b>

**Table.7 Short-term detention certificates 2010-2015: by year and where named person is recorded or consulted**

Named person	Short-term detentions per year									
	2010-11		2011-12		2012-13		2013-14		2014-15	
	No.	%	No.	%	No.	%	No.	%	No.	%
Recorded	2778	80	2738	79	2903	81	2968	81	3157	79
Consulted	1851	53	1895	55	1990	56	1997	54	2109	53

**Table.8 Compulsory powers granted, by order type and NHS Board 2014-15 - number, rate per 100k population and NRAC formula adjustment**

NHS Board	Emergency Detention		Short Term Detention	
	No.	Rate per 100K	No.	Rate per 100K
Ayrshire and Arran	142	38	206	56
Borders	29	25	72	63
Dumfries and Galloway	74	49	105	70
Fife	150	41	275	75
Forth Valley	95	32	195	65
Grampian	134	23	384	66
Greater Glasgow and Clyde	604	53	1093	96
Highland	157	49	212	66
Lanarkshire	177	27	331	51
Lothian	249	29	749	87
Orkney	7	32		
Shetland	9	39	12	52
State			3	
Tayside	171	41	345	83
Western Isles	8	29	11	40
<b>SCOTLAND</b>	<b>2006</b>	<b>38</b>	<b>3993</b>	<b>75</b>

**Table.9 Compulsory Treatment Orders granted 2014-15 - number and rate per 100k population**

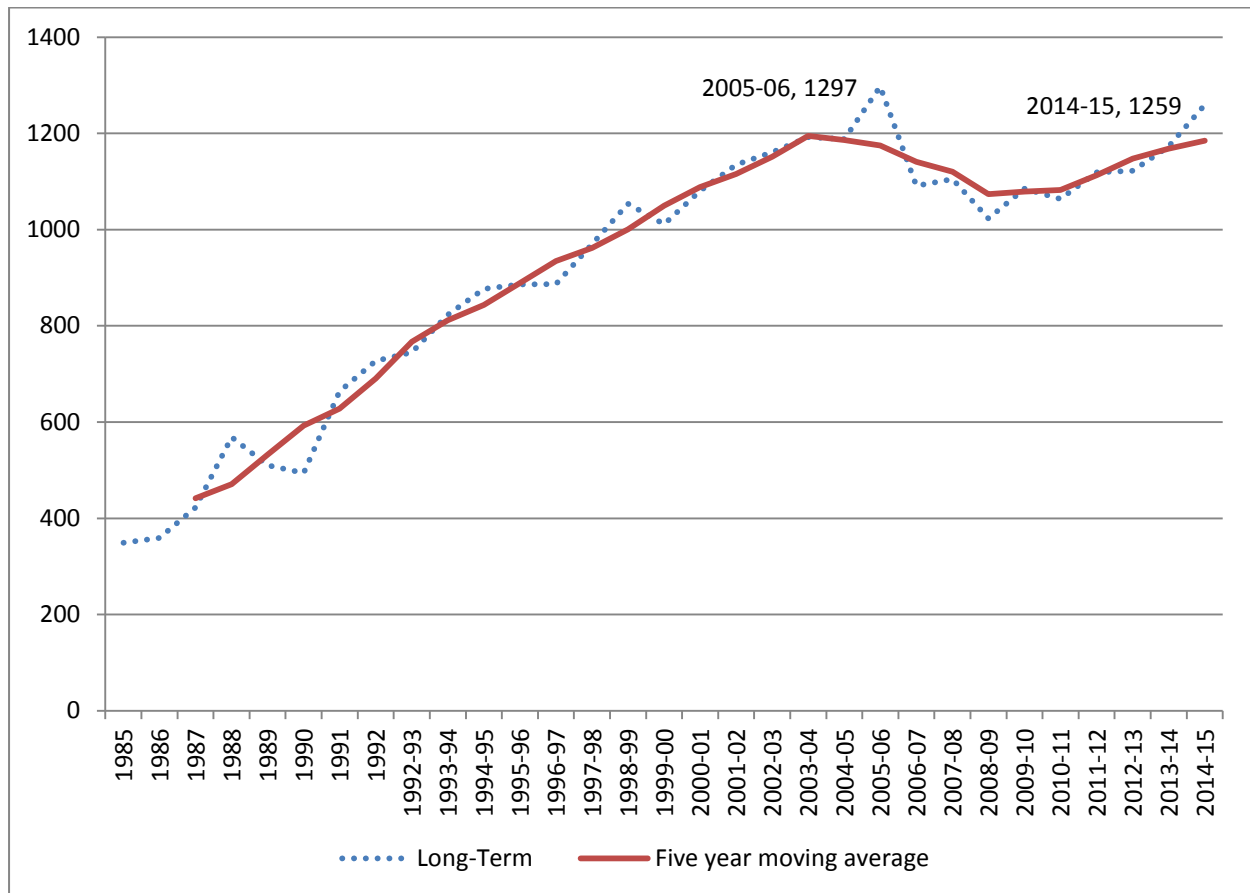
NHS Board	CTOs granted		
	*No.	Rate per 100K	NRAC adjusted
Ayrshire and Arran	46	12	
Borders	23	20	
Dumfries and Galloway	33	22	
Fife	104	28	
Forth Valley	45	15	
Grampian	111	19	
Greater Glasgow & Clyde	364	32	
Highland	80	25	
Lanarkshire	89	14	
Lothian	241	28	
Orkney			
Shetland			
Tayside	116	28	
The State Hospital	4		
Western Isles	3	11	
SCOTLAND	1259	24	

\*CTO numbers provided by - Mental Health Tribunal Scotland. (MHTS)

**Table.10 The use of nurse's power to detain by hospital and gender 2014-15**

Hospital	Women	Men	Total
	No.	No.	No.
Arrol Park Resource Centre	1		1
Ayrshire General	1		1
Blythswood House	1		1
Borders general	1		1
Carseview Centre	5	1	6
Crosshouse	5	1	6
Dr. Grays	2		2
Dykebar	5		5
Forth Valley Royal	1		1
Gartnavel Royal	5	6	11
Glen O'Dee		1	1
Graham Anderson House		1	1
Hairmyres	1	3	4
Huntlyburn House	5	1	6
Inverclyde Royal	2	2	4
Kingsway Care Centre		1	1
Leverndale	7	1	8
Lynebank		1	1
Mackinnon House		1	1
Midlothian Community	1		1
Midpark	8	9	17
Murray Royal	2	2	4
New Craigs	4	4	8
Queen Margaret	2		2
Royal Cornhill	4	4	8
Royal Edinburgh	30	15	45
Royal Infirmary Edinburgh	1	1	2
Seafield	1		1
Skye house	1		1
St John's	11	3	14
Strathcarro Hospital	1		1
Stratheden	2	2	4
Surehaven	1	2	3
Udston	1		1
Western Isles		1	1
Whytemans Brae	6	1	7
Wishaw General	1	3	4
<b>SCOTLAND</b>	<b>119</b>	<b>67</b>	<b>186</b>

**Figure Error! No text of specified style in document. Trend in the granting of new long-term civil orders 1985-2015: five year moving average**



**Table.11 Number of extant compulsory orders on 1 January 2015 (Rate per 100,000 populations, by NHS Board in rank order).**

NHS Board	Rate per 100K population*
Greater Glasgow & Clyde	82
Tayside	70
Fife	65
Highland	65
Lothian	62
Forth Valley	53
Grampian	39
Ayrshire & Arran	39
Dumfries & Galloway	35
Borders	34
Lanarkshire	29
Western Isles	7
Shetland	4
<b>Scotland**</b>	<b>60</b>

\*These figures have been calculated based on all orders, including indeterminate orders. Base population is MYE 2014 by full population by Health Board area.



\*\* A small number of people may have more than one order extant on the same day (e.g. a MHA and a CPSA order).

**Table 12 Individuals readmitted from community CTOs 2008-15**

	<b>2008-09</b>	<b>2009-10</b>	<b>2010-11</b>	<b>2011-12</b>	<b>2012-13</b>	<b>2013-14</b>	<b>2014-15</b>
All CCTOs*	684	741	802	838	903	916	912
Readmissions	127	122	146	147	148	170	172
%	19%	16%	18%	18%	16%	19%	19%





Thistle House  
91 Haymarket Terrace  
Edinburgh  
EH12 5HE  
Tel: 0131 313 8777  
Fax: 0131 313 8778  
Service user and carer  
freephone: 0800 389 6809  
[enquiries@mwscot.org.uk](mailto:enquiries@mwscot.org.uk)  
[www.mwscot.org.uk](http://www.mwscot.org.uk)