

dignity &
rights
ethical treat
respect ca
& equality

STATISTICAL MONITORING

SEPTEMBER 2016

10. Appendix: Mental Health Act monitoring 2015-2016 - Tables

Table 10.1 Emergency detention by age and gender 2015-16

Age Range	Women	Men	Total	Women	Men	Total	Women	Men	Total
	No.	No.	No.	%	%	%	% change from 2013-14		
0-15	6	2	8	75	25	100	-33.3	-75.0	-52.9
16-17	9	12	21	43	57	100	-47.1	9.1	-25.0
18-24	129	130	259	50	50	100	-0.8	25.0	10.7
25-44	361	423	784	46	54	100	7.8	18.2	13.1
45-64	335	328	663	51	49	100	13.9	20.6	17.1
65-84	185	187	372	50	50	100	0.5	-3.6	-1.6
85+	55	31	86	64	36	100	-1.8	-8.8	-4.4
Total	1080	1113	2193	49	51	100	5.4	13.5	9.3

Table 10.2 EDCs with and without MHO consent by NHS Board 2015-16

Health Board	Rate per 100K Population	Before detention		MHO consent			
		Community	Hospital	With		Without	
		%	%	No.	%	No.	%
Ayrshire & Arran	29	30	70	71	67	35	33
Borders	16	56	44	14	78	4	22
Dumfries & Galloway	56	58	42	44	52	40	48
Fife	45	43	57	130	78	36	22
Forth Valley	43	35	65	71	54	60	46
Grampian	17	76	24	62	61	39	39
Greater Glasgow & Clyde	63	38	62	250	35	469	65
Highland	39	56	44	71	57	53	43
Lanarkshire	30	31	69	137	69	62	31
Lothian	38	52	48	218	65	116	35
Orkney	65	86	14	14	100		0
Shetland	13	67	33	3	100		0
Tayside	44	58	42	134	73	50	27
Western Isles	37	40	60	4	40	6	60
Scotland	41	45	55	1223	56	970	44

Table 10.3 EDCs by pre-detention status and MHO consent to detention 2015-16

Pre-detention status*	MHO Consent					
	With		Without		Total	
	No.	%	No.	%	No.	%
Informal in hospital	599	50	604	50	1203	100
From community	624	63	366	37	990	100
Total	1223	56	970	44	2193	100

Table 10.4 EDCs by time of granting of certificate and MHO consent to detention 2015-16

Time of granting certificate	EDCs		MHO consent				
			With		Without		Total
	No.	%	No.	%	No.	%	No.
Within office hours	660	30	400	61	260	39	660
Outside office hours	1533	70	823	54	710	46	1533
Total	2193	100	1223	56	970	44	2193

Table 10.5 Duration of emergency detention certificates granted 2015-16

	Within 24 hours of admission		24-72 hours after admission		Total	
	No.	%	No.	%	No.	%
EDCs revoked	284		310		594	27
EDC superseded by STDC	740		491		1231	56
Order expired at 72 hours	n/a		n/a		354	16
Not available	*8		*6		*14	1
Total	1032		807		2193	100

*For 14 people we were unable to determine the duration of the EDC; the dispersal across length of time has been estimated this is fewer than the 19 last year.

Table 10.6 Short-term detention certificates granted by age and gender 2015-16

Age Range	Women	Men	Total	Women	Men	Total
	No.	No.	No.	%	%	%
0-15	41	6	47	87	13	100
16-17	41	26	67	61	39	100
18-24	157	218	375	42	58	100
25-44	574	720	1294	44	56	100
45-64	568	622	1190	48	52	100
65-84	510	453	963	53	47	100
85+	106	56	162	65	35	100
Total	1997	2101	4098	49	51	100

Table 10.7 Short-term detention certificates 2010-2016: by year and where named person is recorded or consulted

Named person	Short-term detentions per year											
	2010-11		2011-12		2012-13		2013-14		2014-15		2015-16	
	No.	%	No.	%	No.	%	No.	%	No.	%	No.	%
Recorded	2778	80	2738	79	2903	81	2968	81	3157	79	3247	79
Consulted	1851	53	1895	55	1990	56	1997	54	2109	53	2131	52

Table 10.8 Compulsory powers granted, by order type and NHS Board 2015-16 - number, rate per 100k population

NHS Board	Emergency Detention		Short Term Detention	
	No.	Rate per 100K	No.	Rate per 100K
Ayrshire and Arran	106	29	193	52
Borders	18	16	59	52
Dumfries and Galloway	84	56	105	70
Fife	166	45	272	74
Forth Valley	131	43	243	80
Grampian	101	17	400	68
Greater Glasgow and Clyde	719	63	1173	102
Highland	124	39	199	62
Lanarkshire	199	30	350	53
Lothian	334	38	732	84
Orkney	14	65		
Shetland	3	13	8	34
Tayside	184	44	356	86
The State Hospital			1	
Western Isles	10	37	7	26
SCOTLAND	2193	41	4098	76

Table 10.9 STDCs and CTOs 2015-16 - number and rate per 100k population

NHS Board	Short Term Detention		CTOs granted	
	No.	Rate per 100K	*No.	Rate per 100K
Ayrshire and Arran	193	52	64	17
Borders	59	52	23	20
Dumfries and Galloway	105	70	27	18
Fife	272	74	101	27
Forth Valley	243	80	57	19
Grampian	400	68	137	23
Greater Glasgow & Clyde	1173	102	402	35
Highland	199	62	68	21
Lanarkshire	350	53	99	15
Lothian	732	84	234	27
Orkney				
Shetland	8	34		
Tayside	356	86	148	36
The State Hospital	1		2	
Western Isles	7	26	4	15
SCOTLAND	4098	76	1366	25

*CTO numbers provided by - Mental Health Tribunal Scotland. (MHTS)

Table 10.10 The use of nurse's power to detain by hospital and gender 2015-16

Hospital	Women	Men	Total
	No.	No.	No.
Ailsa		2	2
Argyll and Bute	1		1
Arrol Park Resource Centre		1	1
Borders General	2	2	4
Carseview Centre	3	4	7
Crosshouse	2		2
Dr Grays	2	1	3
Dudhope House	2		2
Dykebar	4		4
Forth Valley Royal	3	1	4
Gartnaval Royal	1	2	3
Hairmyres	3	2	5
Leverndale	3	4	7
Lynebank	1	2	3
Mackinnon House	1		1
Midpark	5	6	11
Monklands	3	1	4
Murray Royal	1		1
New Craigs	2	6	8
Queen Margaret	2	1	3
Royal Alexandra	1	1	2
Royal Cornhill	2	1	3
Royal Edinburgh	15	12	27
Royal Infirmary Edinburgh		1	1
St Johns	9	2	11
Stratheden	3	2	5
Whytemans Brae	8	1	9
Wishaw General	2		2
Grand Total	81	55	136

Figure 10.1 Trend in the granting of new long-term civil orders 1985-2016: five year moving average

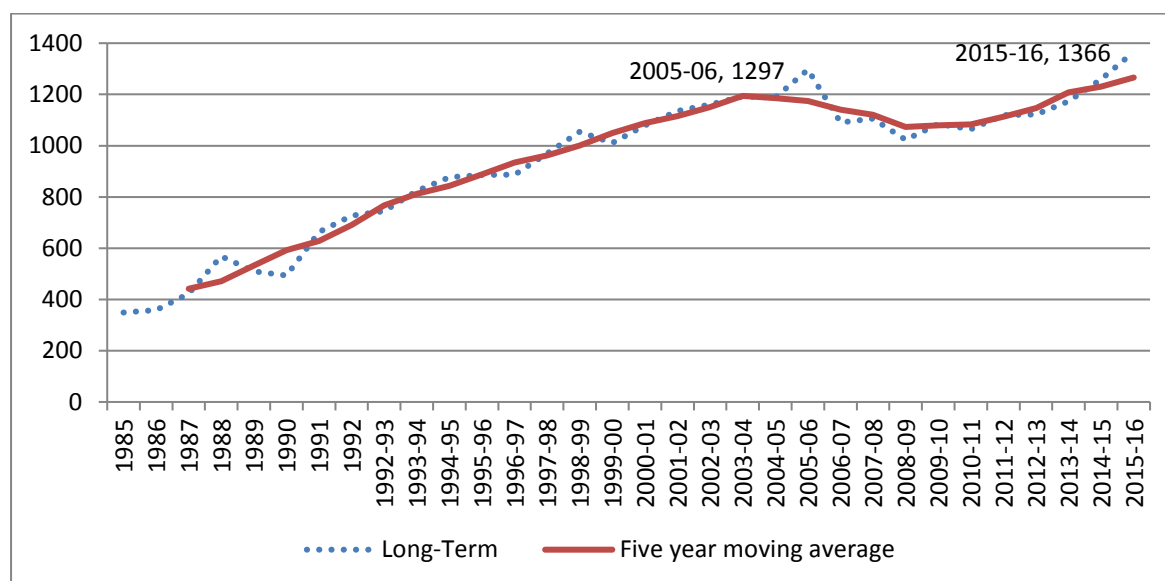


Table 10.11 Number of extant compulsory orders on 1 January 2016 (Rate per 100,000 populations, by NHS Board in rank order).

NHS Board	Rate per 100K population*
Greater Glasgow and Clyde	85
Tayside	78
Lothian	64
Fife	62
Highland	54
Forth Valley	53
Ayrshire and Arran	44
Grampian	42
Dumfries and Galloway	38
Borders	36
Lanarkshire	32
Western Isles	7
Orkney	yy
Shetland	4
Scotland**	62

*These figures have been calculated based on all orders, including indeterminate orders. Base population is MYE 2015 by full population by Health Board area.

** A small number of people may have more than one order extant on the same day (e.g. a MHA and a CPSA order).

YY (<5) Pending transfer to mainland hospital.

Table 10.12 Individuals readmitted from community CTOs 2008-16

	2008-09	2009-10	2010-11	2011-12	2012-13	2013-14	2014-15	2015-16
All CCTOs*	684	741	802	838	903	916	912	960
Readmissions	127	122	146	147	148	170	172	186
%	19%	16%	18%	18%	16%	19%	19%	19%





Thistle House
91 Haymarket Terrace
Edinburgh
EH12 5HE
Tel: 0131 313 8777
Fax: 0131 313 8778
Service user and carer
freephone: 0800 389 6809
enquiries@mwscot.org.uk
www.mwscot.org.uk